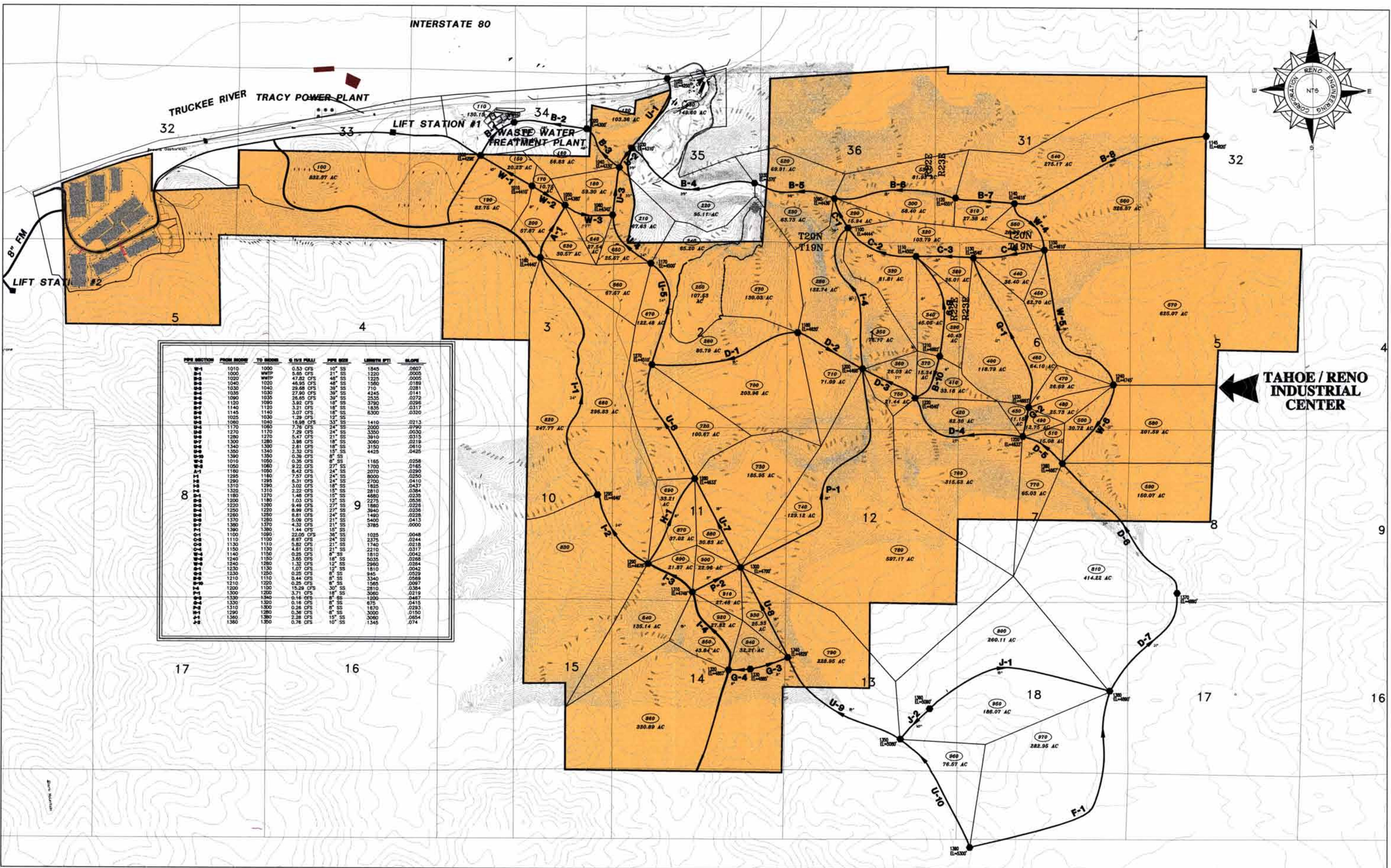


INTERSTATE 80

TRUCKEE RIVER TRACY POWER PLANT

LIFT STATION #1 WASTE WATER TREATMENT PLANT



PIPE SECTION	FROM ELEVATION	TO ELEVATION	G / 100 SLOPE	PIPE SIZE	LENGTH (FT)	SLOPE
B-1	1010	1000	0.53 CFS	10" SS	1845	.0607
B-1	1000	990	5.85 CFS	21" SS	1220	.0005
B-1	1020	1010	47.82 CFS	48" SS	1225	.0005
B-2	1040	1020	46.95 CFS	48" SS	1580	.0189
B-2	1030	1040	28.48 CFS	36" SS	710	.0281
B-2	1030	1030	27.90 CFS	36" SS	4245	.0141
B-2	1090	1035	26.65 CFS	36" SS	2535	.0272
B-2	1120	1090	3.82 CFS	18" SS	3790	.0256
B-2	1140	1120	3.21 CFS	18" SS	1835	.0317
B-2	1145	1140	3.07 CFS	18" SS	6300	.0320
B-2	1025	1030	1.29 CFS	12" SS		
B-2	1080	1040	16.58 CFS	33" SS	1410	.0213
B-2	1170	1080	7.76 CFS	24" SS	2000	.0490
B-2	1270	1270	5.47 CFS	21" SS	3910	.0315
B-2	1300	1280	3.88 CFS	18" SS	3060	.0219
B-2	1340	1330	2.81 CFS	18" SS	3150	.0610
B-2	1350	1340	2.32 CFS	15" SS	4425	.0425
B-2	1390	1350	0.36 CFS	8" SS		
B-2	1010	1050	0.35 CFS	8" SS	1165	.0258
B-2	1050	1060	8.22 CFS	27" SS	1700	.0165
B-2	1160	1060	6.42 CFS	24" SS	2070	.0290
B-2	1285	1160	7.57 CFS	24" SS	8000	.0250
B-2	1290	1285	6.31 CFS	24" SS	2700	.0410
B-2	1310	1290	3.02 CFS	18" SS	1825	.0437
B-2	1320	1310	2.22 CFS	15" SS	2810	.0384
B-2	1180	1270	1.48 CFS	10" SS	4580	.0235
B-2	1200	1180	1.03 CFS	12" SS	2275	.0538
B-2	1220	1200	9.49 CFS	27" SS	1880	.0229
B-2	1250	1250	6.99 CFS	27" SS	3040	.0258
B-2	1260	1250	8.81 CFS	24" SS	1490	.0228
B-2	1370	1285	5.08 CFS	21" SS	5400	.0413
B-2	1380	1370	4.32 CFS	21" SS	3785	.0000
B-2	1390	1380	1.44 CFS	10" SS		
B-2	1100	1090	22.00 CFS	36" SS	1025	.0048
B-2	1110	1100	6.67 CFS	24" SS	2375	.0244
B-2	1130	1110	5.82 CFS	21" SS	1740	.0218
B-2	1150	1150	4.51 CFS	21" SS	2210	.0317
B-2	1140	1150	0.25 CFS	8" SS	1810	.0042
B-2	1240	1150	1.65 CFS	18" SS	5035	.0268
B-2	1240	1260	1.32 CFS	12" SS	2960	.0254
B-2	1230	1130	1.07 CFS	12" SS	1810	.0042
B-2	1330	1250	6.25 CFS	8" SS	945	.0529
B-2	1210	1110	0.44 CFS	8" SS	3340	.0568
B-2	1210	1200	0.25 CFS	8" SS	1565	.0097
B-2	1200	1100	15.29 CFS	30" SS	2810	.0354
B-2	1300	1200	3.71 CFS	18" SS	3080	.0219
B-2	1330	1340	0.14 CFS	8" SS	1299	.0463
B-2	1330	1320	0.16 CFS	8" SS	675	.0415
B-2	1310	1300	0.26 CFS	8" SS	1670	.0283
B-2	1290	1290	0.36 CFS	8" SS	3000	.0150
B-2	1360	1360	2.28 CFS	15" SS	3060	.0654
B-2	1360	1350	0.76 CFS	10" SS	1345	.074

TAHOE / RENO INDUSTRIAL CENTER



RENO ENGINEERING CORPORATION
CIVIL ENGINEERING • DESIGN • LAND PLANNING
3983 S. MCCARRAN BLVD #332 RENO, NV 89502
PHONE: (702) 852-5700 FAX: (702) 852-2104



MASTER SEWER PLAN

MP

Z:\DMG-TRI\WASTEPLANS\SITE-SEWER.dwg, Mon May 12 12:14:48 2003 KDK